

Kennebec Lake Relative Lake Water Levels 2006 to October 2016

2006 to October 2016 Relative Lake Water Levels

Source: Kennebec Lake: State, Care, Planning, 2010, updated March 2014 by Gray Merriam

Charts prepared by Noreen Dertinger, Updated July 23, 2017

Head of Salmon River Gauge (summarized from daily measurements taken by Guenter Nitsche)

There is no absolute baseline for water levels; measures are relative to change. Annual variation is up to 1.99 metres.

	Jan	Feb	March	April	May	June	July	Aug	Sept	Oct	Nov	Dec	Annual Variation
2006 High					77	55	46	18	19	87	133	117	
2006 Low					57	39	19	3	2	21	64	80	
2006 Monthly Variation					20	16	27	15	17	66	69	37	131
	Jan	Feb	March	April	May	June	July	Aug	Sept	Oct	Nov	Dec	Annual Variation
2007 High	93		87	113	84	63	71						
2007 Low	79		68	87	45	34	30						
2007 Monthly Variation	14		19	26	39	29	41						83
	Jan	Feb	March	April	May	June	July	Aug	Sept	Oct	Nov	Dec	Annual Variation
2008 High					107	63		53	36	69		117	
2008 Low					51	52		42		47	75		
2008 Monthly Variation					56	11		11		22			60
	Jan	Feb	March	April	May	June	July	Aug	Sept	Oct	Nov	Dec	Annual Variation
2009 High			116	164	85	60	70	68	32	32	88	82	
2009 Low			96	79	61	31	30	34	25	82	72	90	
2009 Monthly Variation			20	85	24	29	40	34	7	-50	16	-8	134
	Jan	Feb	March	April	May	June	July	Aug	Sept	Oct	Nov	Dec	Annual Variation
2010 High					69	64	64	63	57	94	105	158	
2010 Low					60	56	51	49	41	59	90	97	
2010 Monthly Variation					9	8	13	14	16	35	15	61	117
	Jan	Feb	March	April	May	June	July	Aug	Sept	Oct	Nov	Dec	Annual Variation
2011 High					127	94	44	39	32	40	61	95	
2011 Low					86	45	33	32	26	28	40	67	
2011 Monthly Variation					41	49	11	7	6	12	21	28	101
	Jan	Feb	March	April	May	June	July	Aug	Sept	Oct	Nov	Dec	Annual Variation
2012 High					85	58	42	30	29	52	71	87	
2012 Low					52	43	30	23	25	28	55	68	
2012 Monthly Variation					33	15	12	7	4	24	16	19	65

Kennebec Lake Relative Lake Water Levels 2006 to October 2016

	Jan	Feb	March	April	May	June	July	Aug	Sept	Oct	Nov	Dec	Annual Variation
2013 High					99	102	109	60	54	81	110		
2013 Low					64	64	60	41	44	54	89		
2013 Monthly Variation					35	38	49	19	10	27	21		69

	Jan	Feb	March	April	May	June	July	Aug	Sept	Oct	Nov	Dec	Annual Variation
2014 High				237	119	86	67	53	72	71	69	80	
2014 Low				94	90	61	38	40	54	48	63	75	
2014 Monthly Variation				143	29	25	29	13	18	23	6	5	199

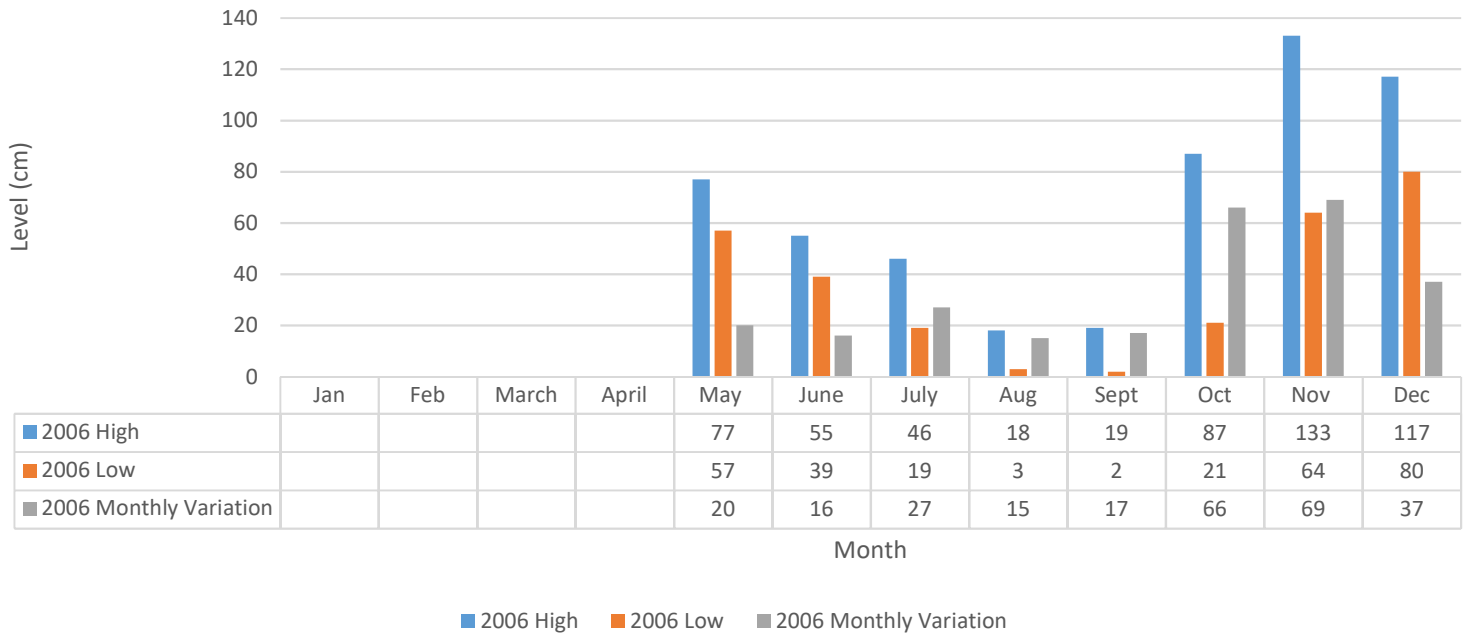
	Jan	Feb	March	April	May	June	July	Aug	Sept	Oct	Nov	Dec	Annual Variation
2015 High				131	96	112	73	55	51	91	100	100	
2015 Low				70	45	46	40	40	42	41	76	72	
2015 Monthly Variation				61	51	66	33	15	9	50	24	28	91

	Jan	Feb	March	April	May	June	July	Aug	Sept	Oct	Nov	Dec	Annual Variation
2016 High				181	75	43	32	27	21	19	20	46	
2016 Low				77	46	32	25	21	14	13	18	40	
2016 Monthly Variation				104	29	11	7	6	7	6	2	6	168

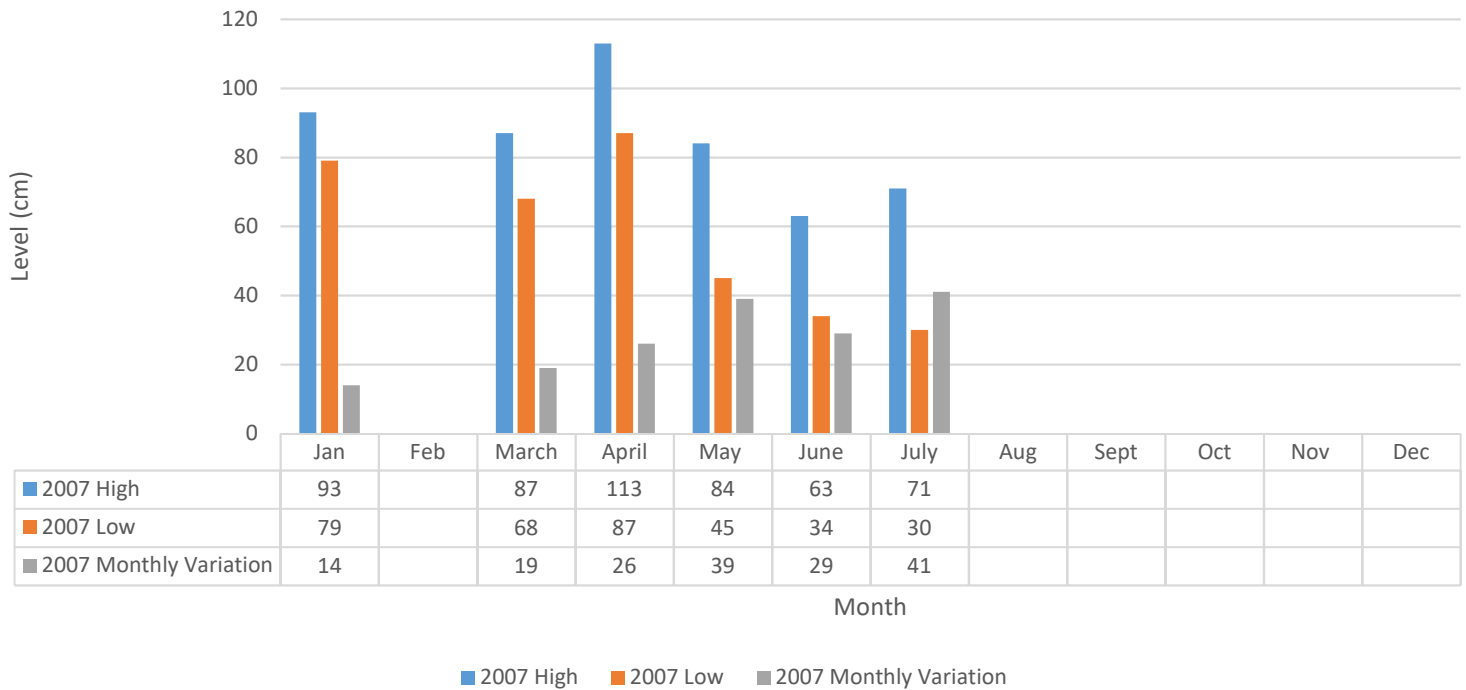
	Jan	Feb	March	April	May	June	July	Aug	Sept	Oct	Nov	Dec	Annual Variation
2017 High				168	186	107	107						
2017 Low				109	81	75	80						
2017 Monthly Variation				59	105	32	27						

Kennebec Lake Relative Lake Water Levels 2006 to October 2016

2006 Relative Lake Water Levels (cm)

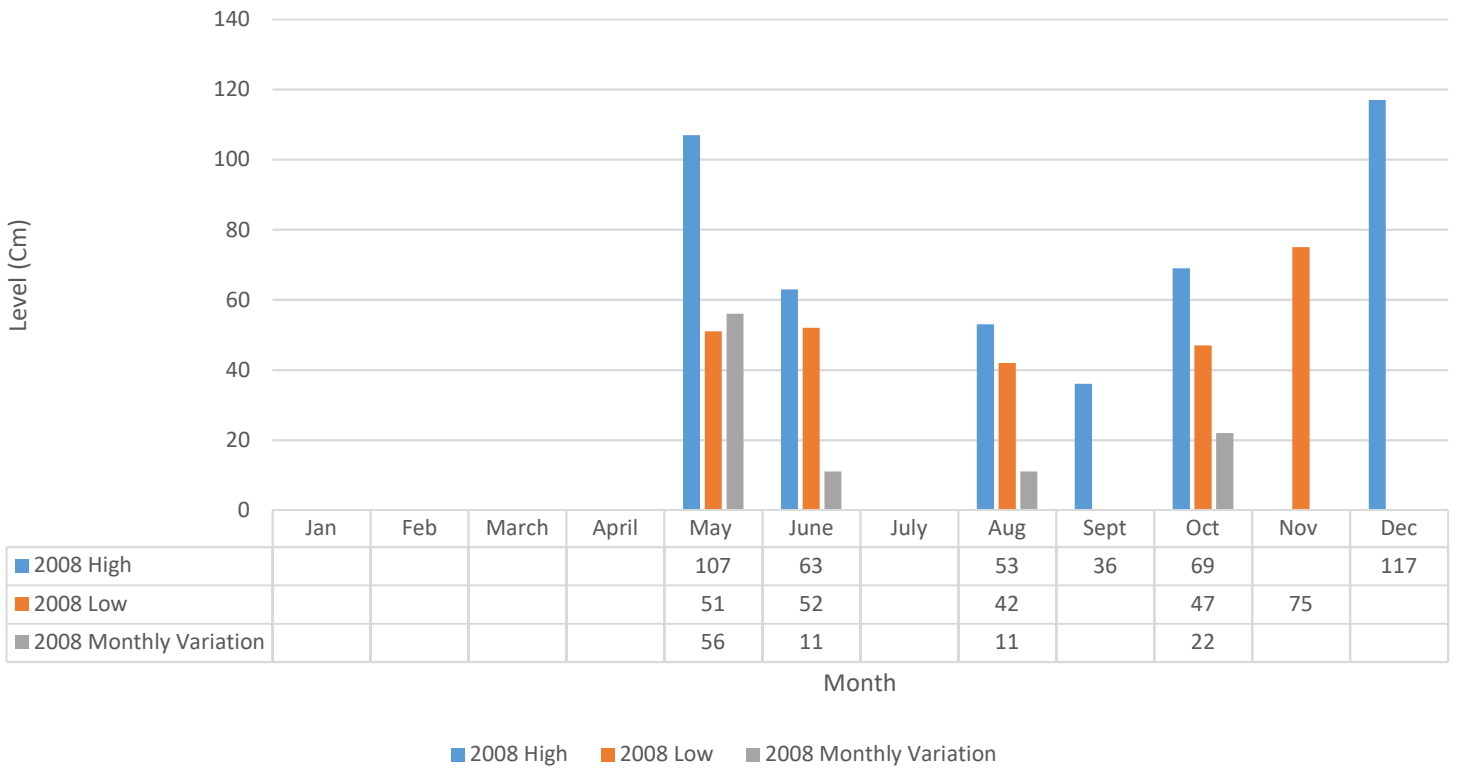


2007 Relative Lake Water Levels (cm)

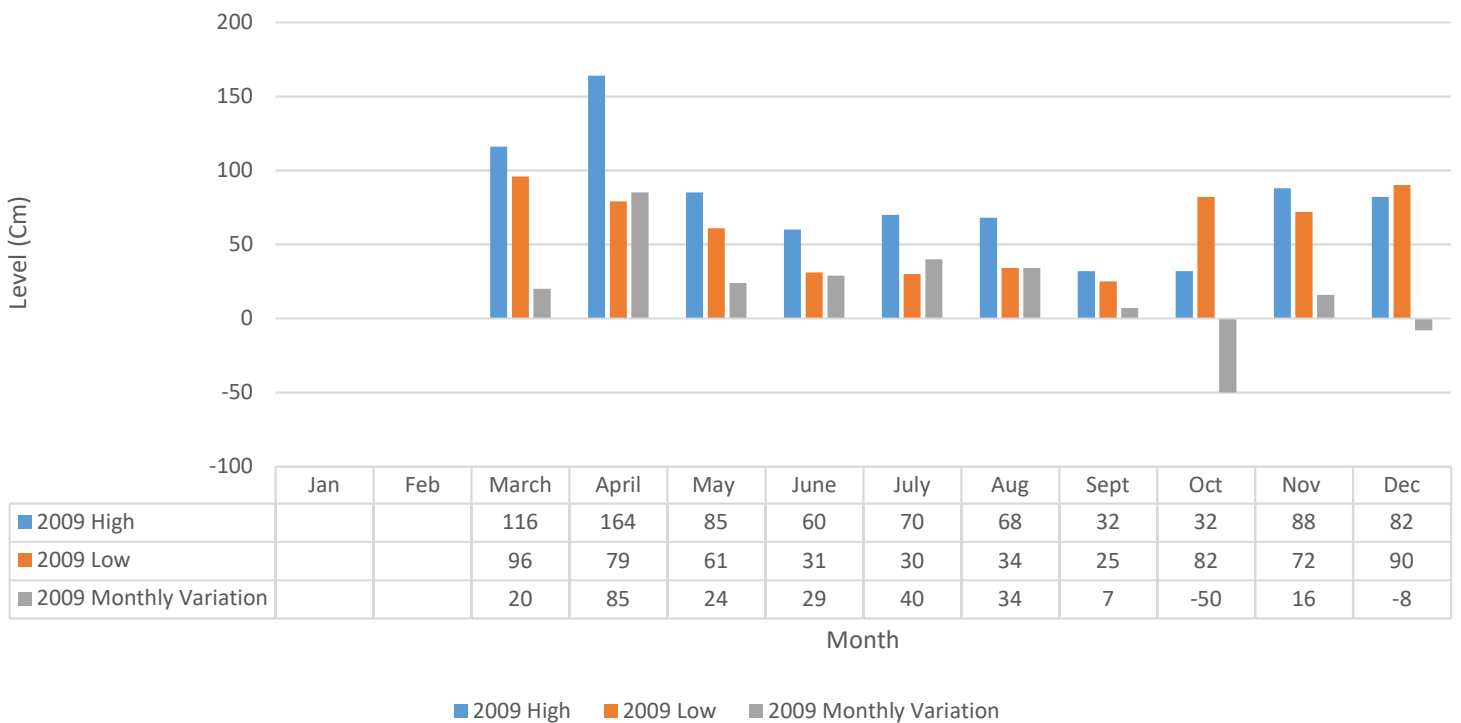


Kennebec Lake Relative Lake Water Levels 2006 to October 2016

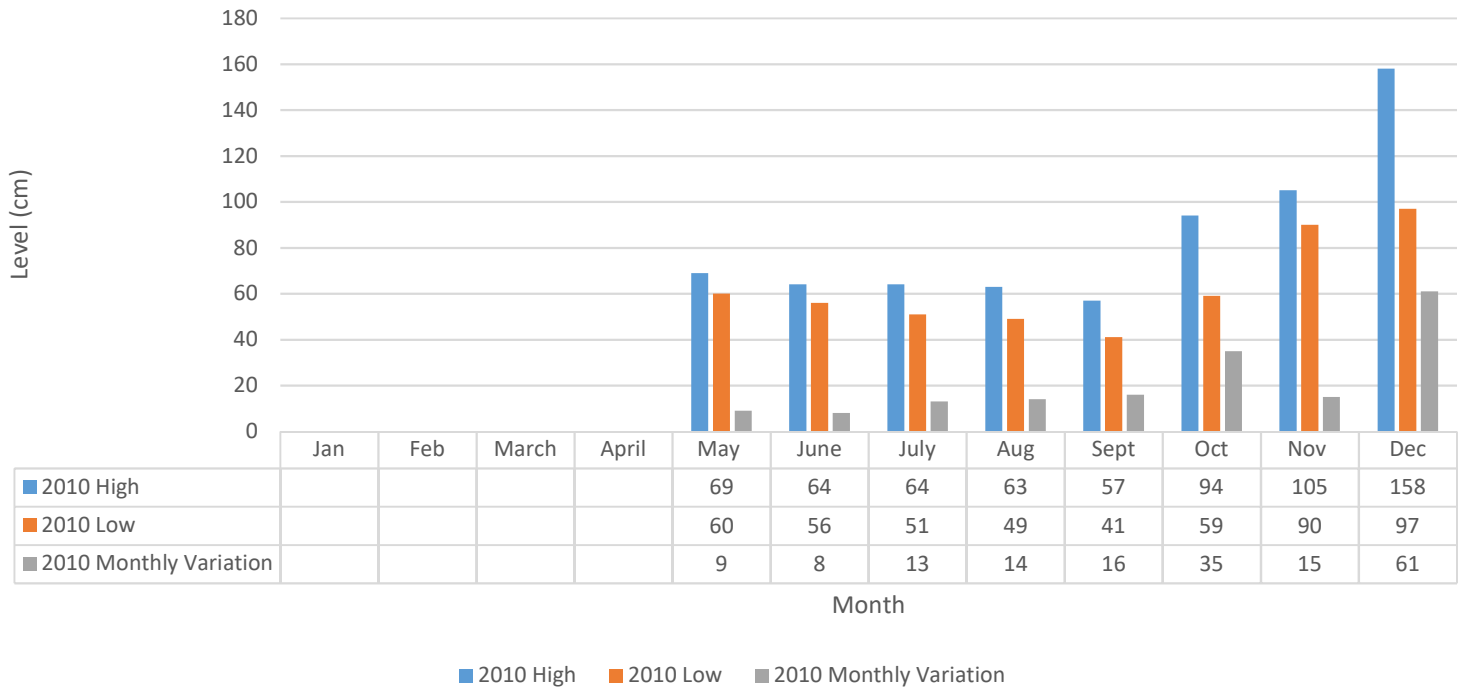
2008 Relative Lake Water Levels (cm)



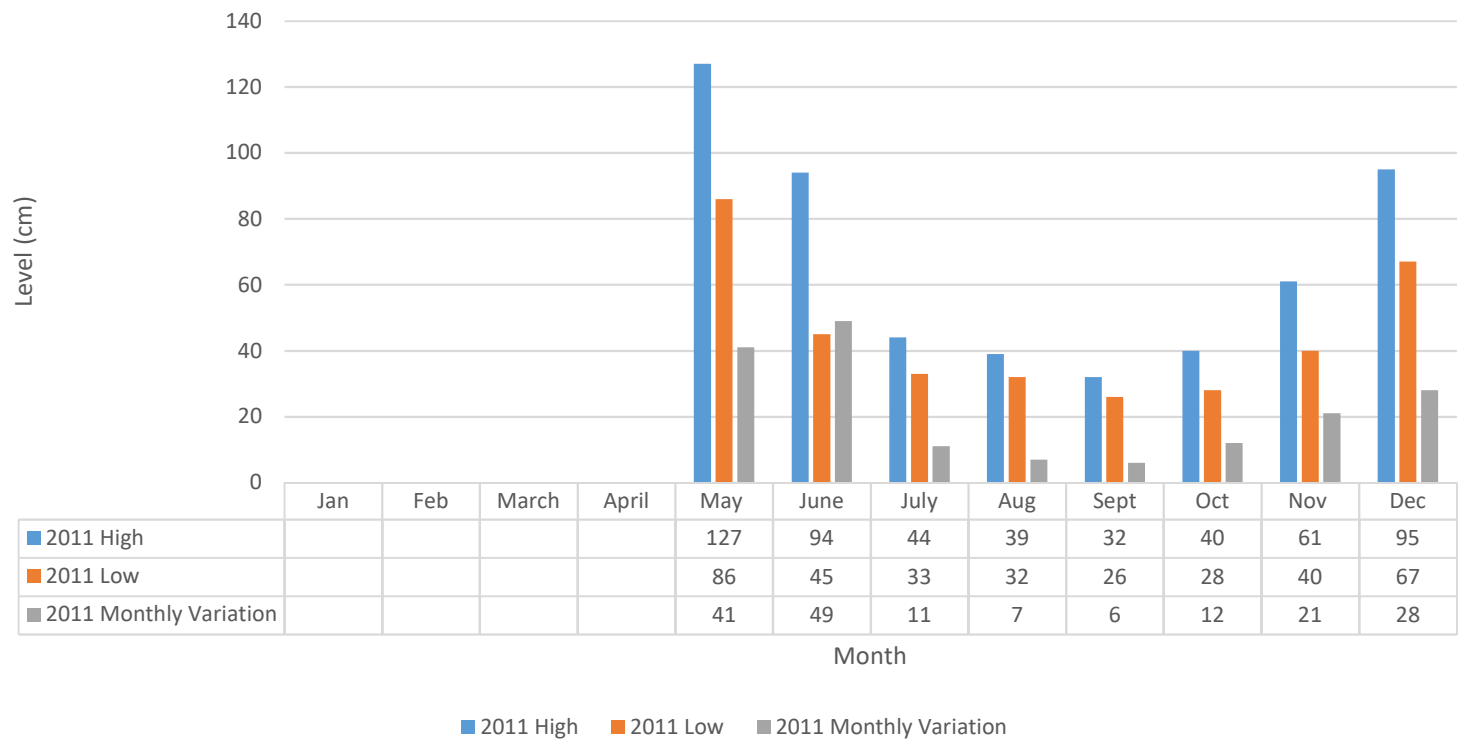
2009 Relative Lake Water Levels (cm)



2010 Relative Lake Water Levels (cm)

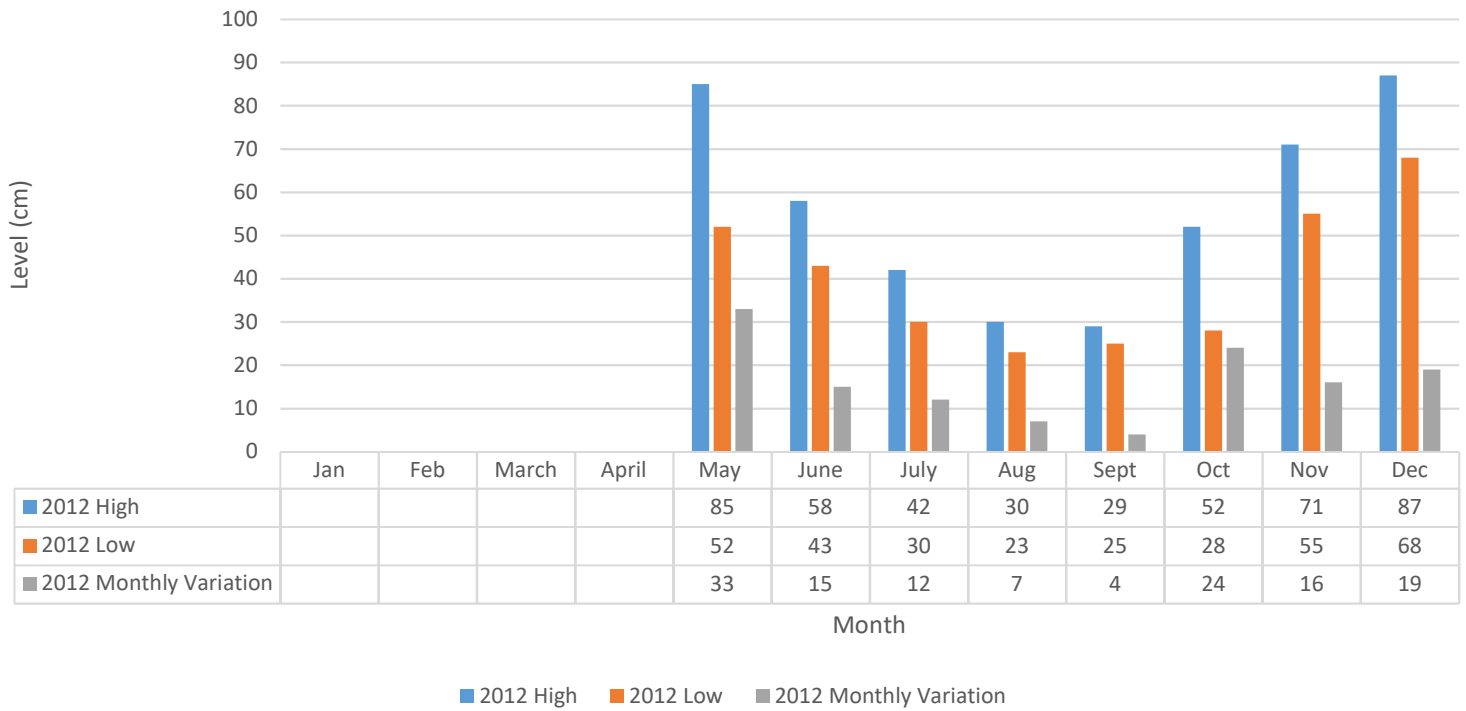


2011 Relative Lake Water Levels (cm)

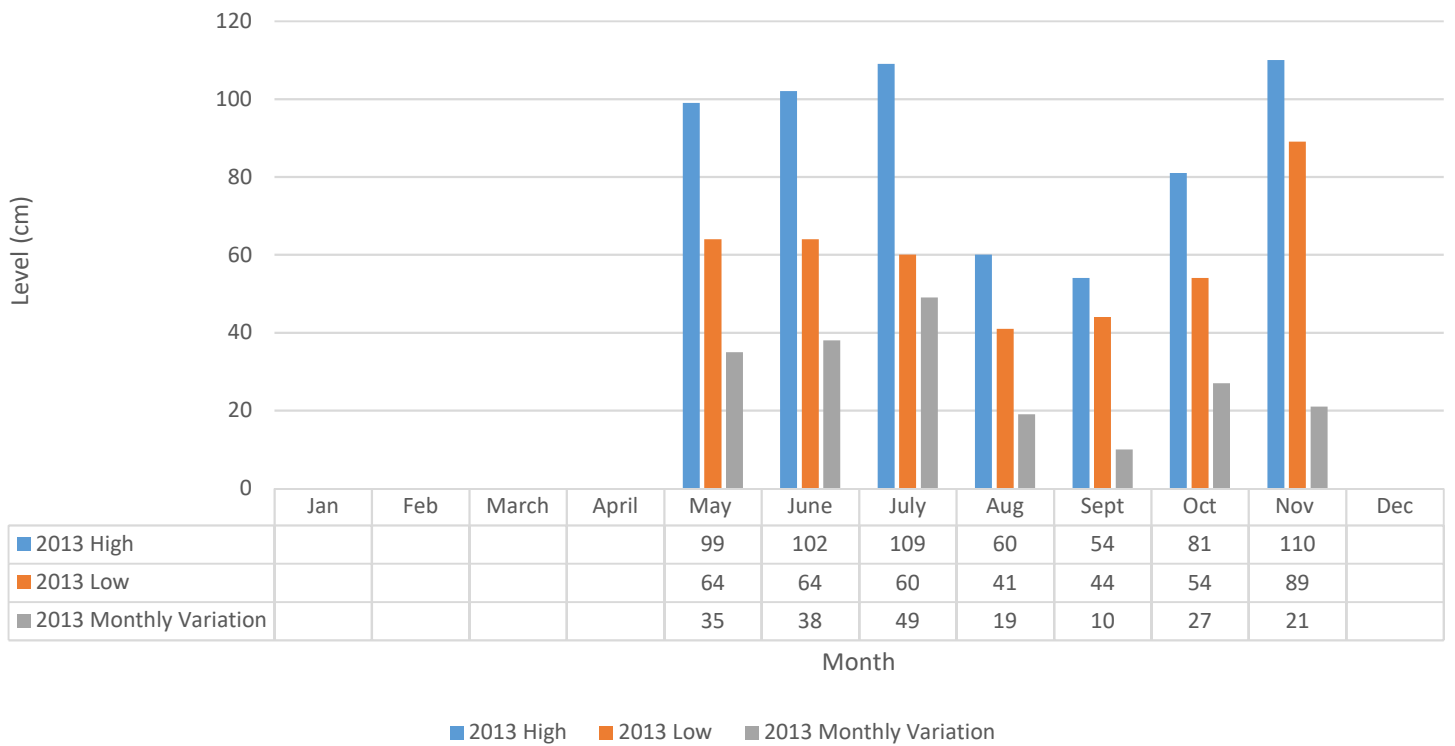


Kennebec Lake Relative Lake Water Levels 2006 to October 2016

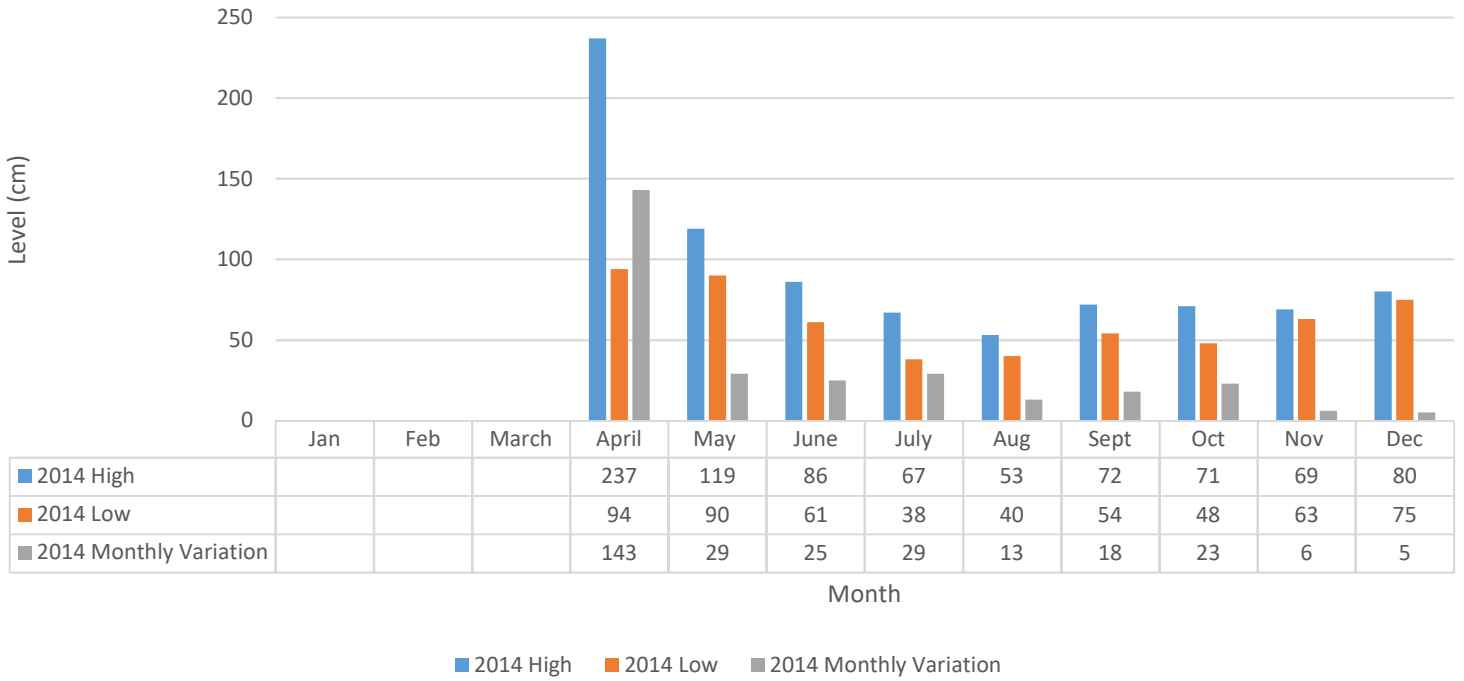
2012 Relative Lake Water Levels (cm)



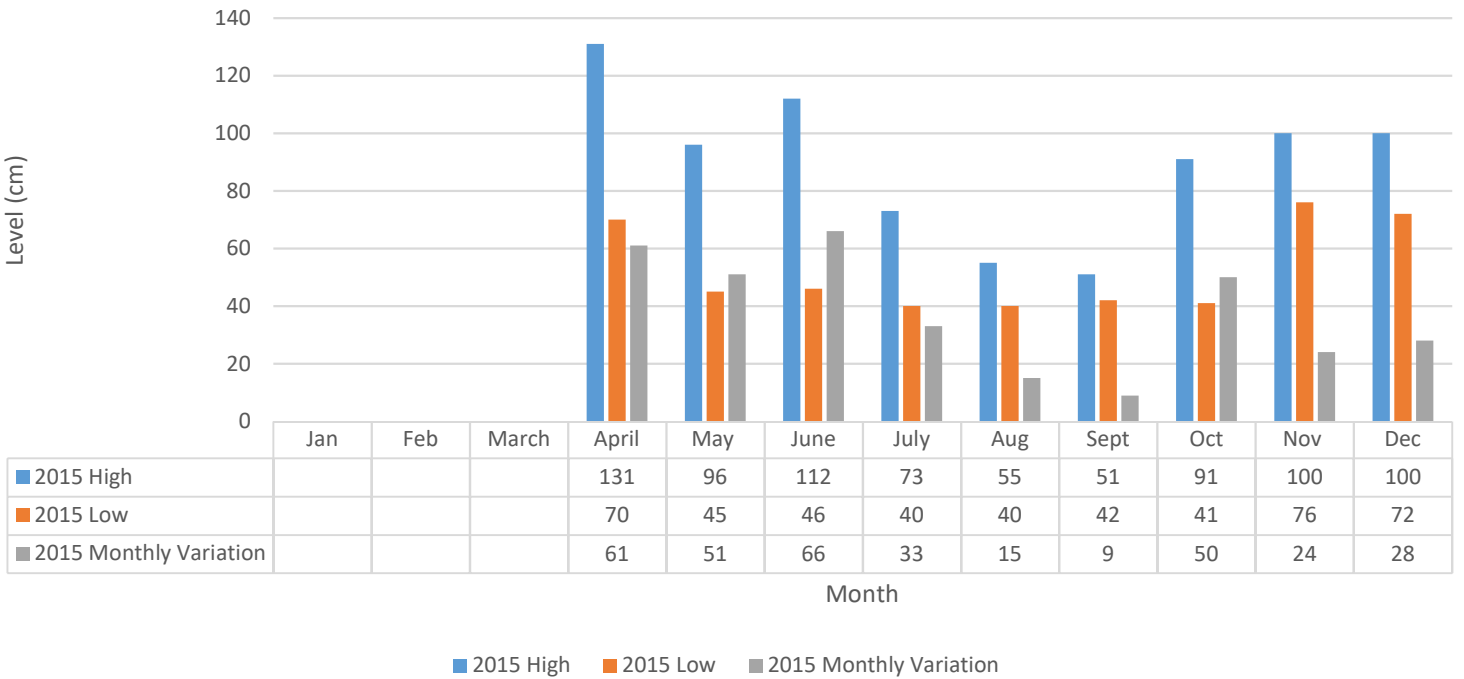
2013 Relative Lake Water Levels (cm)



2014 Relative Lake Water Levels (cm)

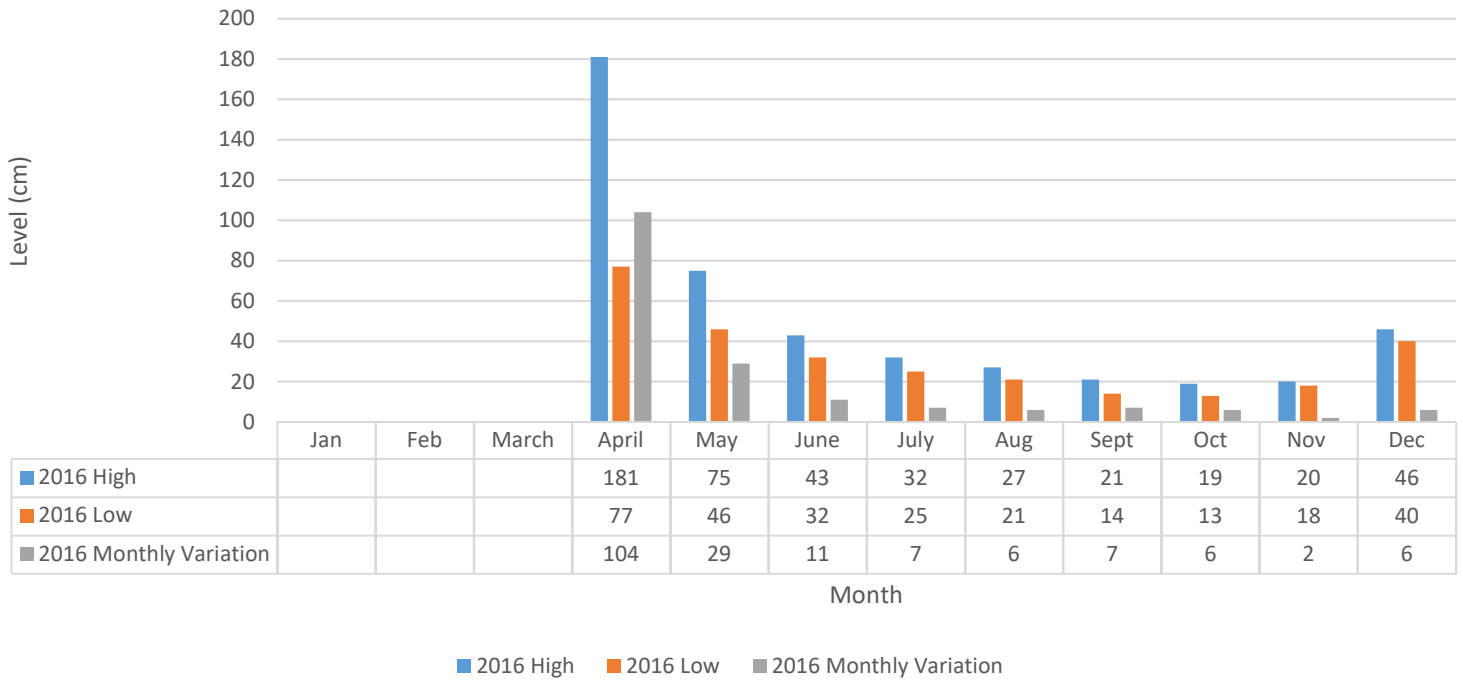


2015 Relative Lake Water Levels (cm)



Kennebec Lake Relative Lake Water Levels 2006 to October 2016

2016 Relative Lake Water Levels (cm)



2017 Relative Lake Water Levels (cm)

